



# EmilyAnn sister sells with her early LEXOR

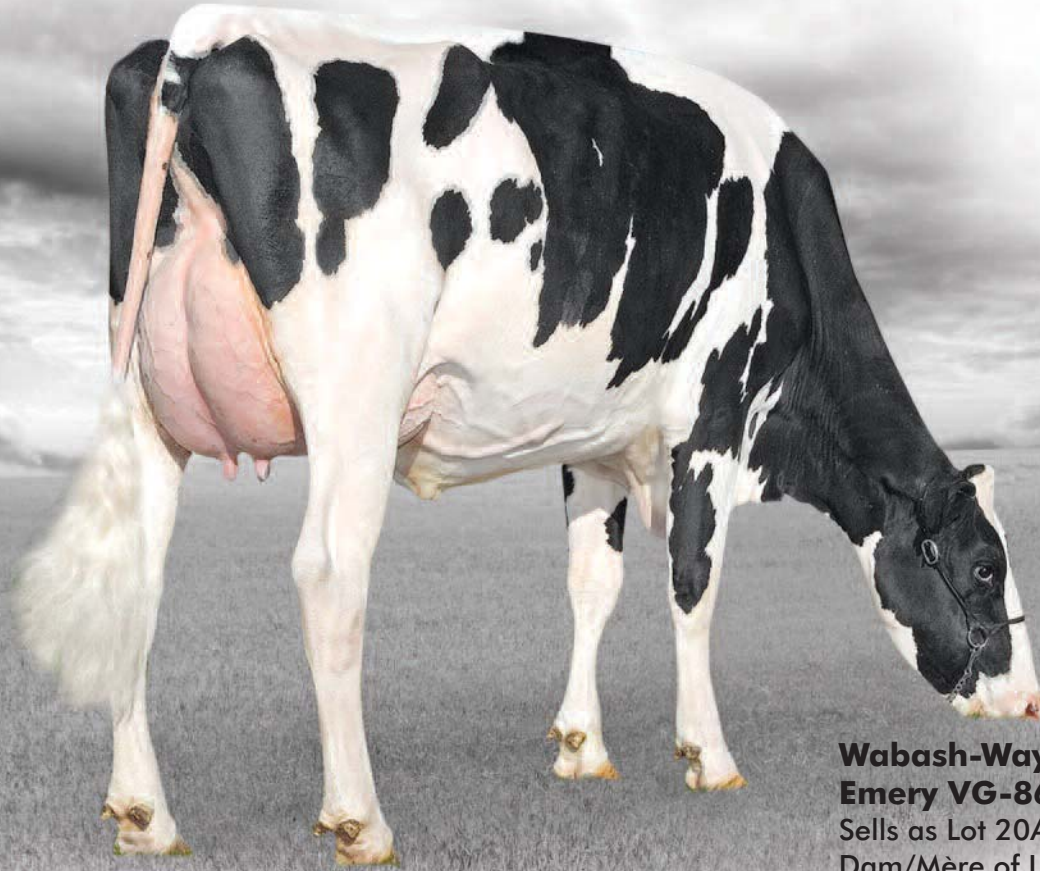
## 20 20A

Generations  
905-873-8700

Oconnors  
905-686-4773

Mapel Wood  
905-648-3213

Coldway  
519-633-8935



Photo©Patty Jones

**Wabash-Way Bolton  
Emery VG-86 2Yr**  
Sells as Lot 20A  
Dam/Mère of Lot 20



## 1<sup>st</sup> CHOICE LEXOR x EMERY From 6 transfers due in Jul '12

CAN-PA Aug\*11 PA LPI+3068  
KG M+1838 F+88 %F+0.20  
SCS 2.78 P+83 %P+0.21  
CAN-PA Aug\*11 Conf+10  
MS+9 F&L+9 DS+5 R+3

• Built in PA +3068 LPI

### GENERATIONS LEXOR PB

HOCANM11098658 \*CVF\*BLF ET GT  
CAN-GPA Aug\*11 69%Rel GPA LPI+3331/65%  
KG M+1661/95% F+91/99% %F+0.28  
SCS 2.72 P+90/99% %P+0.33  
CAN-GPA Aug\*11 64%Rel Conf+11  
MS+9 F&L+11 DS+8 R+3

### LONG-LANGS OMAN OMAN-ET PB

HOUSAM135746776 \*BYF\*CVF\*BLF ET GT  
VG-85-4YR-USA GM\*10  
GMACE Aug\*11 87%Rel GMLPI+2938/83%  
KG M+1760 F+86 %F+0.20 P+93 %P+0.35  
GMACE Aug\*11 83%Rel Conf+8

### COMESTAR GOLDWYN LILAC PB

HOCANF103455285 ETM GT  
VG-89-5YR-CAN  
04-06 305 19612 902 4.6 669 3.4  
365 22935 1048 4.6 790 3.4  
BCA 404 496 429  
2 LACT: 45451 2112 4.6 1654 3.6 KG

### SANDY-VALLEY BOLTON-ET PB

HOUSAM131823833 \*BYC\*CVF\*BLF ET GT  
EX-90-5YR-USA GM\*10 EXTRA\*10  
CAN-GEBV Aug\*11 99%Rel GLPI+2302/99%  
KG M+2053 F+73 %F-0.02 P+58 %P-0.08  
CAN-GEBV Aug\*11 99%Rel Conf+12

### CROCKETT-ACRES ELITA-ET PB

HOUAF136012191 ET GT  
VG-87-4YR-USA DOM 2\*(0/12)  
02-02 305 15486 581 3.8 542 3.5  
365 17695 671 3.8 627 3.5  
1 LACT: 17994 684 3.8 639 3.6 KG  
Progeny Data: 0EX 4VG 2GP 0G 0F  
5 DAUS ME AVG: 15403 647 4.2 484 3.1  
AVG BCA: M291 F331 P293



## WABASH-WAY BOLTON EMERY VG-86 2YR

### WABASH-WAY BOLTON EMERY-ET VG-86 2Yr

HOUAF138737920 \*BYF ET GT B:2007 Nov 02  
VG-86-2YR-CAN  
MS:87(FA:8 RAH:7 RAW:8) F&L:86 DS:85 R:84  
CAN-GEBV Aug\*11 74%Rel GLPI+2804/71%  
KG M+2015/98% F+84/99% %F+0.12  
SCS 2.84 P+76/99% %P+0.08  
CAN-GEBV Aug\*11 70%Rel Conf+8/90%  
MS+9 F&L+7 DS+1 R+3  
02-03 305 12905 561 4.3 412 3.2  
365 15206 651 4.3 492 3.2  
BCA 315 372 317  
1 LACT: 21456 929 4.3 730 3.4 KG  
AVG BCA: M315 F372 P317

3rd Dam:  
**CROCKETT-ACRES MTOT ELLY-ET**  
EX-90-6YR-USA DOM GMD 4\*  
06-04 283 17618 583 3.3 591 3.4

4th Dam:  
**WAUREGAN RUDOLPH ELLY MAE**  
EX-90

5th Dam:  
**WHITTIER-FARMS LEAD MAE-ET**  
EX 3E-95 GMD DOM

6th Dam:  
**RAYMAU BSTAR MONICA-ET**  
VG-89-2Yr DOM

7th Dam:  
**JUNIPER JASON MARIA-ET**  
VG-87 DOM

8th Dam:  
**JDM-PRIDE VALIANT MAGGIE**  
EX-91 GMD DOM

9th Dam:  
**LA-KO-LAND PENSTATE SADIE**  
VG-87 GMD DOM

10th Dam:  
**LA-KO-LAND BOOTMAKER SALLY**  
VG-86

11th Dam:  
**LA-KO-LAND MONITOR NANCY**  
EX-90

**GTPI + 2085 (08/11) USDA 50K  
+514NM\$ +2.6PL +2.11GPTAT**

# Gerard from the Super Mega family



**60**

Stepido  
819-455-2289

LePacha  
819-827-4385

4<sup>th</sup> dam  
4<sup>e</sup> mère  
**Stepido**  
**Super Mega**  
**VG-88 22\***



Dam/Mère  
**Stepido Shottle**  
**Goodgirl VG-86 2Yr**

2<sup>nd</sup> dam/2<sup>e</sup> mère  
**Stepido Golden**  
**Girl VG-89 2Yr**  
3-11 14,593 kg  
4.5% 3.2% (287-351-289)  
Dams: Outside Girl EX-93 4\*,  
Super Mega VG-88 22\*

Photos: Super-Mega@Sylvie Gouin,  
Girl & Coofair@Vicki Fletcher



## STEPIDO GERARD GODIVA

HOCANF107152414 ETM B:2011 Apr 29  
CAN-GPA Aug\*11 64%Rel GPA LPI+2398/60%  
KG M+1031/86% F+69/99% %F+0.30  
SCS 2.94 P+56/98% %P+0.21  
CAN-GPA Aug\*11 59%Rel Conf+13/99%  
MS+13 F&L+4 DS+8 R+3

**SCHILLVIEW OMAN GERARD-ET PB**  
HOUSAM52805723 \*BYF\*CVF\*BLF ET GT  
EX-92-5YR-USA GM\*10  
GMACE Aug\*11 88%Rel GMLPI+2365/84%  
KG M+1974/98% F+57/94% %F-0.15  
SCS 3.17 P+83/99% %P+0.19  
GMACE Aug\*11 83%Rel Conf+10/96%  
MS+12 F&L+1 DS+6 R+2

**STEPIDO SHOTTLE GOODGIRL PB**  
HOCANF103964117 GT B:2009 Jun 27  
CAN-GPA Aug\*11 74%Rel GPA LPI+1970/72%  
KG M+665/72% F+66/99% %F+0.41  
SCS 2.63 P+30/86% %P+0.08  
CAN-GPA Aug\*11 71%Rel Conf+12/99%  
MS+9 F&L+10 DS+9 R+7  
02-01 P 61 9713 430 4.4 327 3.4  
PBCA 254 301 266  
1 LACT: 2065 96 4.6 69 3.3 KG  
AVG BCA: M254 F301 P266



**GTPI +2178 (08/11) USDA 3K**  
**580NM\$ 4.0PL 2.94GPTAT**

\* **DGV LPI +2514**

**O-BEE MANFRED JUSTICE-ET PB**  
HOUSAM122358313 \*CVF\*BLF\*DPP\*RDF ET GT  
EX-94-7YR-USA SP\*07 GM  
CAN-GEV Aug\*11 99%Rel GLPI+2343/98%  
KG M+1500 F+80 %F+0.23 P+78 %P+0.24  
CAN-GEV Aug\*11 98%Rel Conf-2

**SCHILLVIEW MARSH GLASH-ET PB**  
HOUSAF50546487 \*CVC\*BLF ET  
VG-89-6YR-USA DOM  
02-02 305 11653 519 4.5 412 3.5  
365 13513 629 4.7 492 3.6  
2 LACT: 33298 1586 4.8 1238 3.7 KG

**PICSTON SHOTTLE-ET PB**  
HOGBRM598172 \*BYF\*CVF\*BLF ET GT  
EX-96-7YR-GBR EXTRA\*09 GM\*10  
CAN-GEV Aug\*11 99%Rel GLPI+2076/99%  
KG M+1517 F+61 %F+0.06 P+46 %P-0.03  
CAN-GEV Aug\*11 99%Rel Conf+12

**STEPIDO GOLDEN GIRL PB**  
HOCANF104249474 ET GT  
VG-89-4YR-CAN  
02-06 305 10063 425 4.2 331 3.3  
BCA 245 278 253  
03-11 305 14593 657 4.5 465 3.2  
316 15012 675 4.5 480 3.2  
BCA 287 351 289  
2 LACT: 30151 1337 4.4 989 3.3 KG  
AVG BCA: M266(+41) F315(+85) P271(+51)  
1 Superior Lactation  
Progeny Data:  
1 DAUS ME AVG: 13444 588 4.4 440 3.3  
AVG BCA: M254 F301 P266

3rd Dam :  
**STEPIDO OUTSIDE GIRL**  
EX-93-CAN 4\*

4th Dam :  
**STEPIDO SUPER MEGA**  
VG-88 22\*  
My Favorite Cow 2011 Quebec  
Progeny:  
10 EX & 23 VG including 21 VG 2Yr

5th Dam :  
**STEPIDO BROKER PASCALE**  
VG-86 5\*

6th Dam :  
**STEPIDO STARBUCK PAOLA**  
VG-86 3\*

7th Dam :  
**PERTH PAULA**  
EX-2E 1\*  
Grand Champion Papineau  
1987-1988-1989  
Grand Champion Pontiac 1989